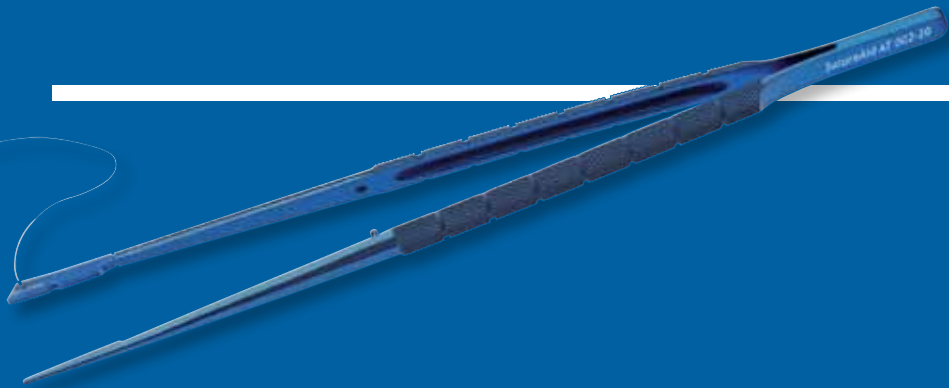




SutureAid

Engineering the art of Surgery

The first forceps that helps you in complex suturing



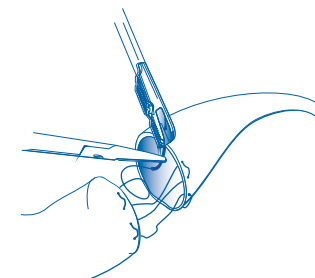
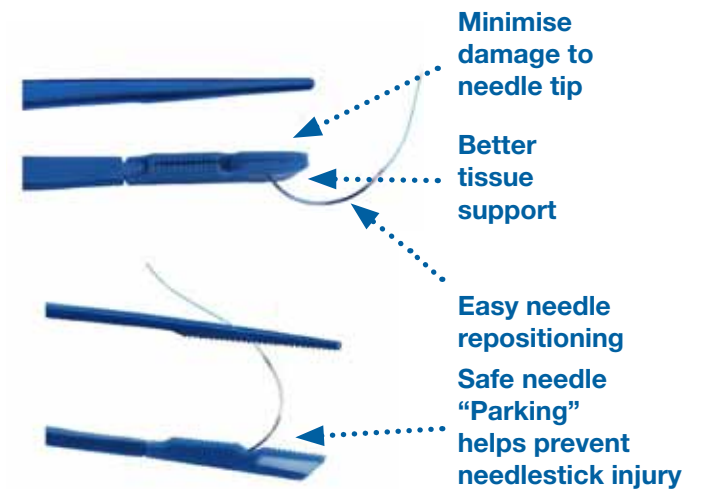
Surgery is part science, part art. SutureAid is dedicated to improving the quality of surgery by making products that consider both.

**“I find these
forceps useful
doing distal carotid
and proximal aorta
anastomoses”**

Vascular Surgeon - Utrecht

Our Forceps

SutureAid AT are equipped with a disposable ‘pin cushion’ at the end of the forceps. This pin cushion lets the surgeon capture and manipulate the suture needle more easily, along with many other benefits.



During anastomosis, the SutureAid AT forceps simultaneously supports the tissue, and captures and grips the needle

“This device works especially well in colorectal surgery, upper abdominal surgery, and in general with patients with a lot of intraperitoneal fat”

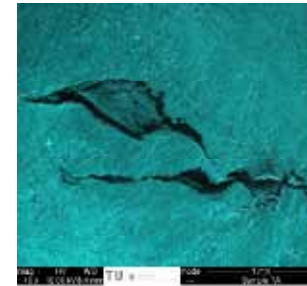
Gastro-intestinal Surgeon - Nijmegen

Our Experience

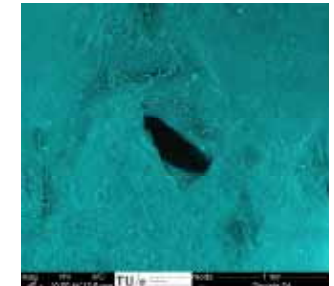
Before the needle penetrates the tissue, the tissue is stretched by the point of the needle. Tissue stretching can result in tearing. The SutureAid AT provides a solid back-stop, so stretching is prevented.

Tissue Support

This advantage of the SutureAid AT may be most useful in suturing delicate vascular grafts and in brittle calcified vessels.



Perforation resulting from vascular tissue pierced without tissue support



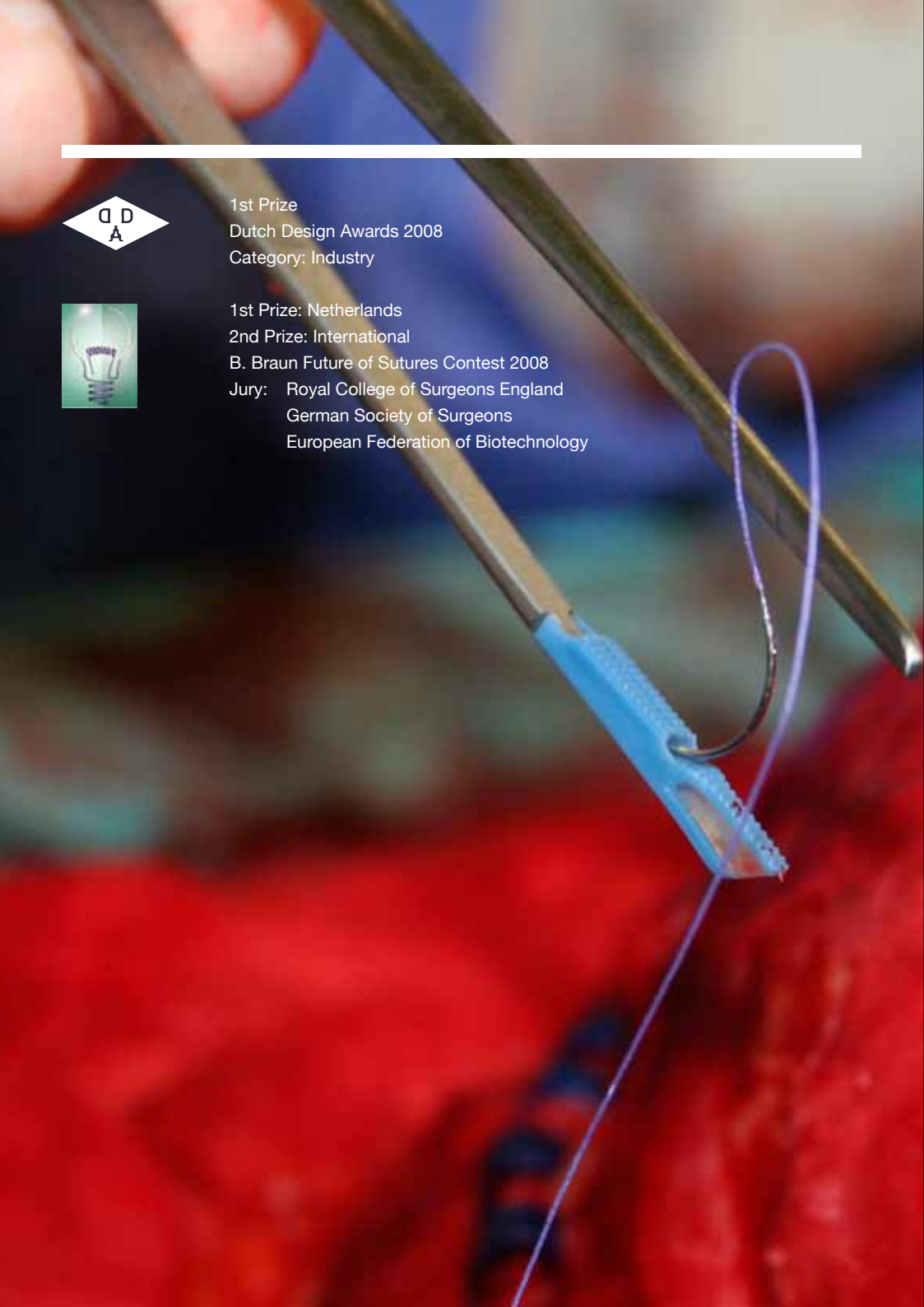
Perforation resulting from vascular tissue pierced with tissue support using SutureAid

Clinical

Clinical experience shows that the SutureAid AT is most appreciated by surgeons in complex suturing; when visibility is poor, or when tissue quality is sub-optimal.

Surgical Personnel particularly appreciate prevention of needlestick injury with contaminated suture needles.

Notes: The main cause of needlestick injury in the OR is suture needles, and the incidence is still increasing (Jagger et al. Am. Coll Surg., 2010; 210: 496-502.)



1st Prize
Dutch Design Awards 2008
Category: Industry



1st Prize: Netherlands
2nd Prize: International
B. Braun Future of Sutures Contest 2008
Jury: Royal College of Surgeons England
German Society of Surgeons
European Federation of Biotechnology

Forceps

Forceps are available in a range of sizes and styles. All SutureAid forceps are made from surgical grade titanium, and finished with blue anodizing. All forceps have a needle receptor connection on one arm.

Catalog Number	Description	Length	
SutureAid AT-001-15	Flat handle	15 cm	
SutureAid AT-002-15	Round handle	15 cm	
SutureAid AT-001-18	Flat handle	18 cm	
SutureAid AT-002-18	Round handle	18 cm	
SutureAid AT-001-20	Flat handle	20 cm	
SutureAid AT-002-20	Round handle	20 cm	
SutureAid AT-001-24	Flat handle	24 cm	
SutureAid AT-002-24	Round handle	24 cm	

Needle Receptors

Needle receptors are supplied in cartons of 10 pieces, and fit into standard suture racks. SutureAid AT Needle Receptors suit suture needles from size 5-0 up to 2-0. Smaller and larger needles can be used, however other SutureAid products may better suit your needs.

Catalog Number	Description	Width	
NR-AT-T-1	SutureAid AT (10)	1.5 mm	

Name



SutureAid

Engineering the art of Surgery

Our Distributor

Krijnen Medical Innovations B.V.

sutureaid@krijnenmedical.nl

www.krijnenmedical.nl

Middenstraat 44

4153 AD Beesd

The Netherlands

Tel +31 (0) 345 682604

Fax +31 (0) 345 681504



European Patent

No. 17487334

Latex Free

Radio Opaque

Sterile

Visit www.sutureaid.com for the latest news and product information

customer.service@sutureaid.com